

Bass-ic Exercises

Major Scales - half & 1st position

Bb Major Scale

1 4 0 1 4 0 2 4 4 2 0 4 1 0 4 1

F Major Scale

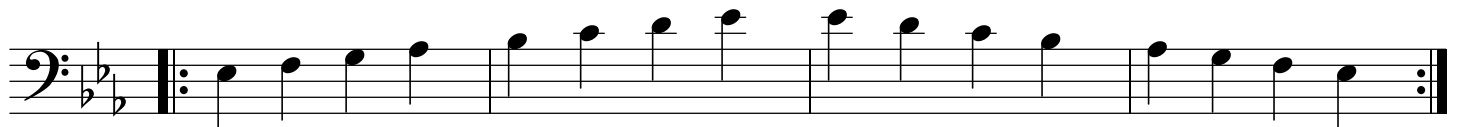
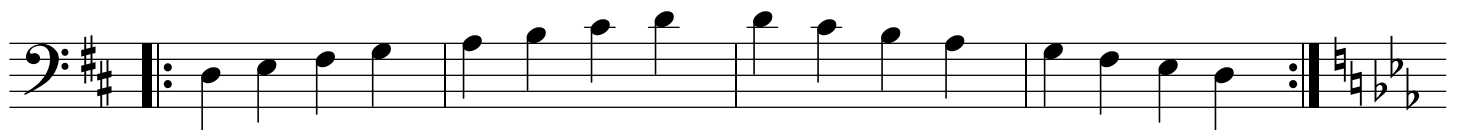
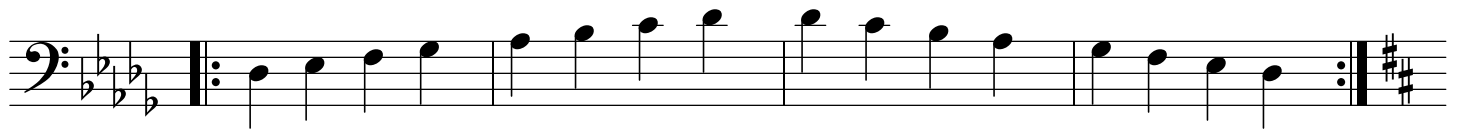
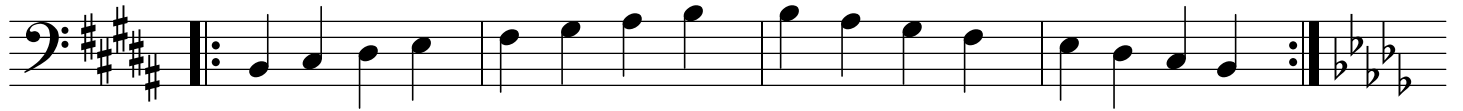
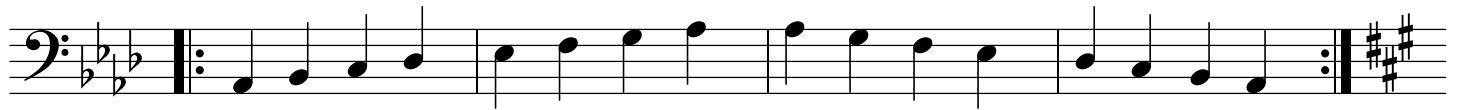
G Major Scale

The Chromatic Scale

C Major Scale

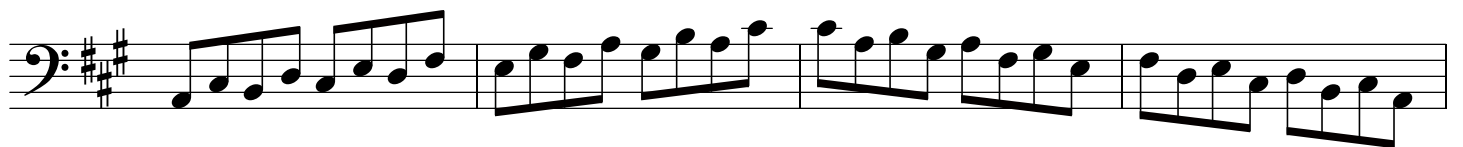
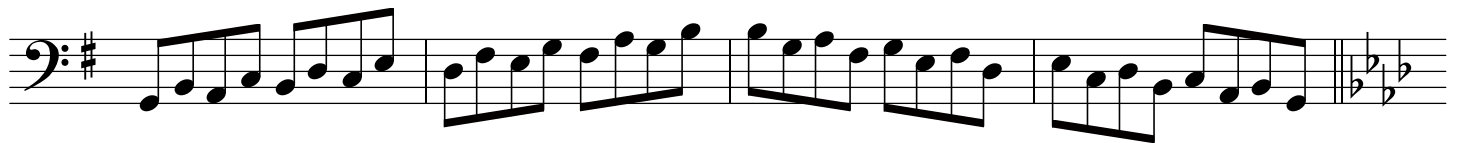
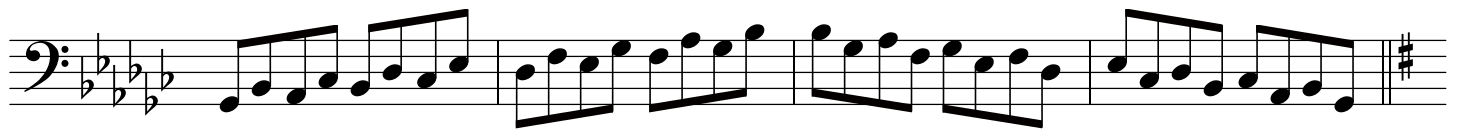
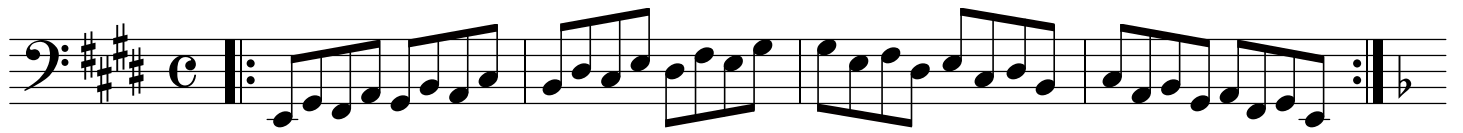
Bass-ic Exercises

Major Scales: E, F#, Ab, A, B, Db, D, and Eb--lowest octave



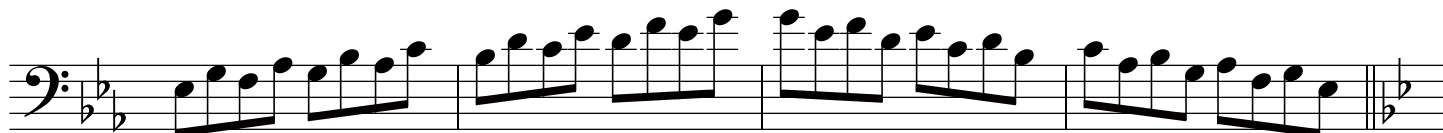
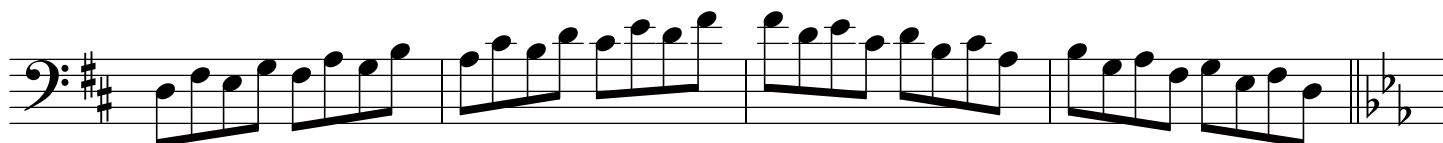
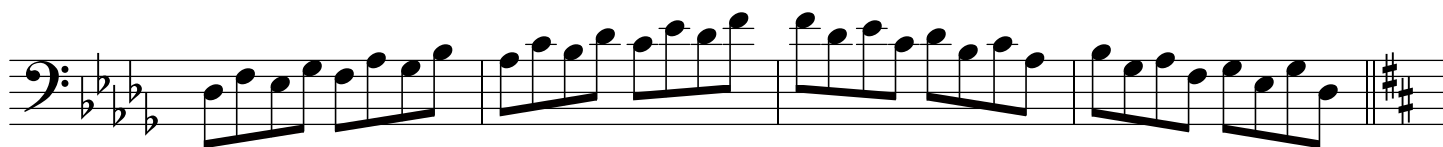
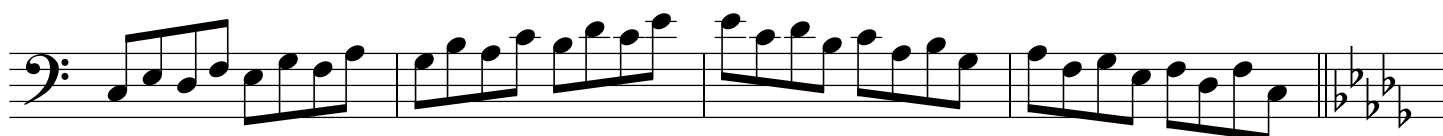
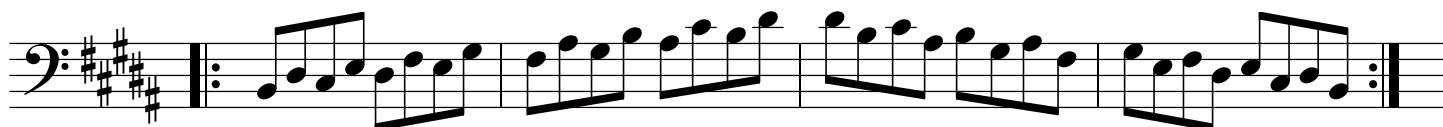
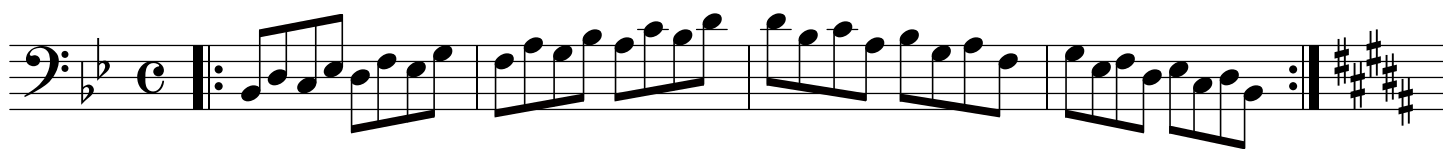
Bass-ic Exercises

Thirds in diatonic sequence for the E,F,Gb,G,Ab, and A major scales



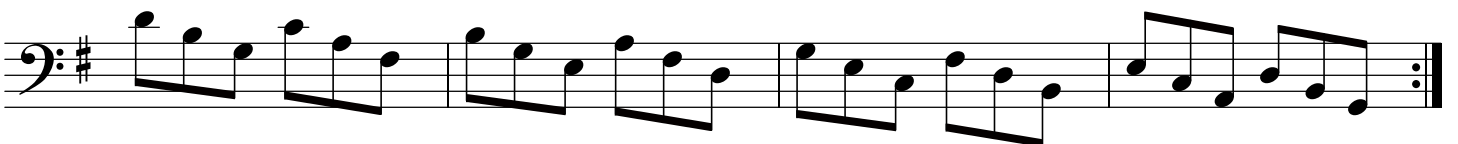
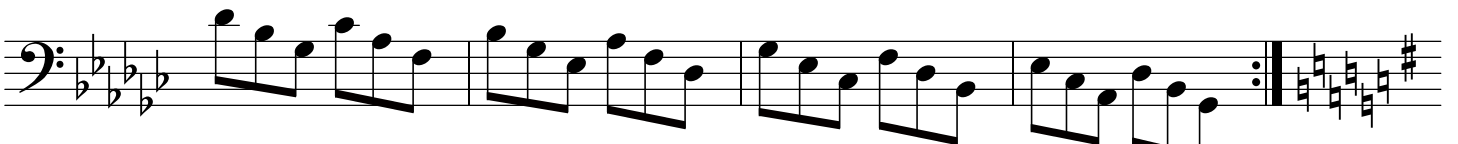
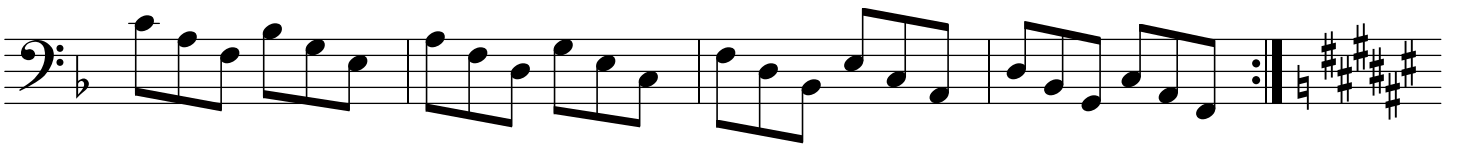
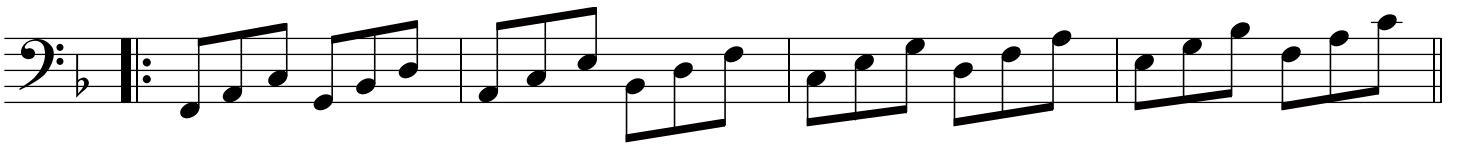
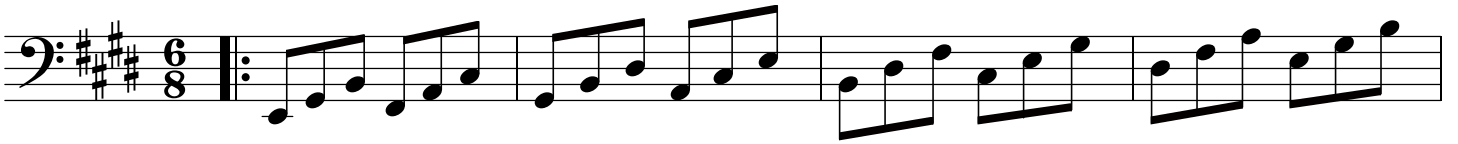
Bass-ic Exercises

Thirds in diatonic sequence for the **Bb,B,C,Db,D,** and **Eb** major scales



Bass-ic Exercises

Diatonic scale-tone triads for the E, F, F#-Gb, and G major scales



Bass-ic Exercises

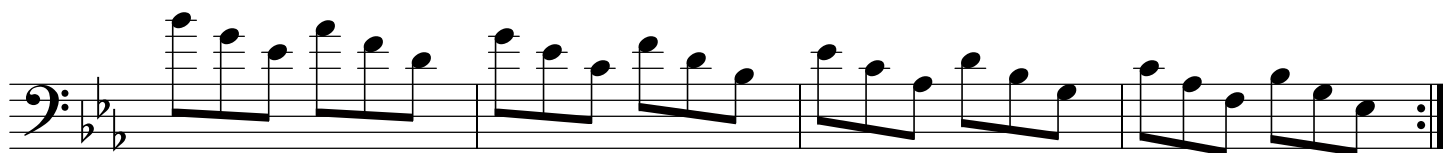
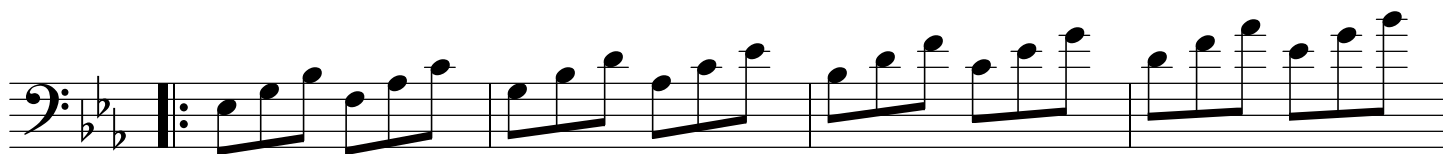
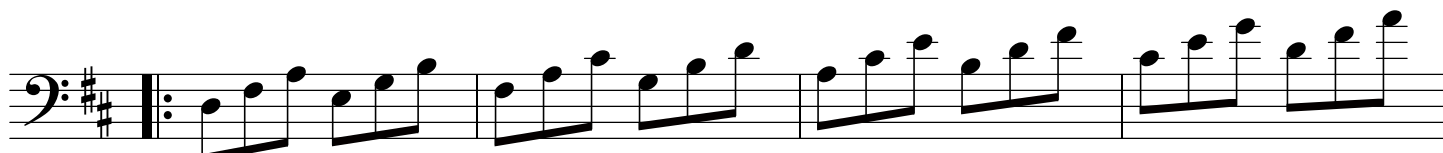
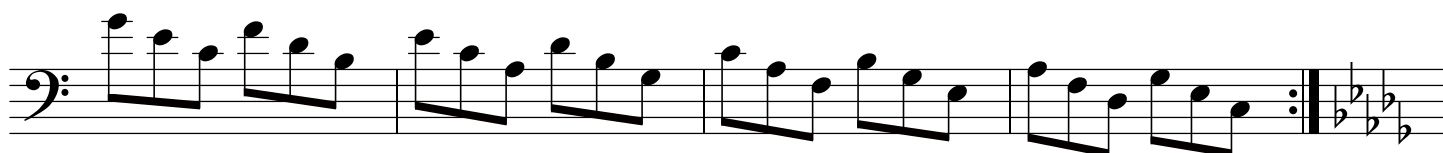
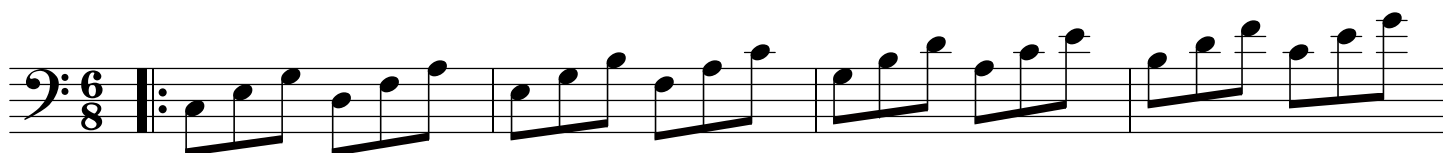
Diatonic scale-tone triads for the **A^b**, **A**, **B^b**, and **B** major scales

The image contains eight staves of musical notation, each representing a different major scale exercise. Each staff begins with a bass clef and a repeat sign. The exercises are as follows:

- Staff 1: A-flat major (6/8 time), triads: A^b2, A^b3, A^b4, A^b5, A^b6, A^b7.
- Staff 2: A-flat major, triads: A^b2, A^b3, A^b4, A^b5, A^b6, A^b7.
- Staff 3: A major, triads: A2, A3, A4, A5, A6, A7.
- Staff 4: A major, triads: A2, A3, A4, A5, A6, A7.
- Staff 5: B-flat major, triads: B^b2, B^b3, B^b4, B^b5, B^b6, B^b7.
- Staff 6: B-flat major, triads: B^b2, B^b3, B^b4, B^b5, B^b6, B^b7.
- Staff 7: B major, triads: B2, B3, B4, B5, B6, B7.
- Staff 8: B major, triads: B2, B3, B4, B5, B6, B7.

Bass-ic Exercises

Diatonic scale-tone triads for the **C,Db,D,** and **Eb** major scales



Bass-ic Exercises

Scale-tone 7th chord arpeggios for the keys of **E, F, F#-Gb, and G** major.

I II III IV V VI VII I
EMaj⁷ F#min⁷ G#min⁷ AMaj⁷ B⁷ C#min⁷ D#min⁷^{b5} EMaj⁷

Write in the name of each chord and learn to recite them by memory as you memorize and learn to play them.

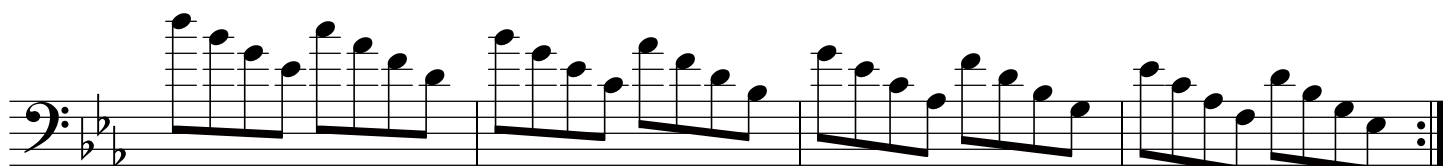
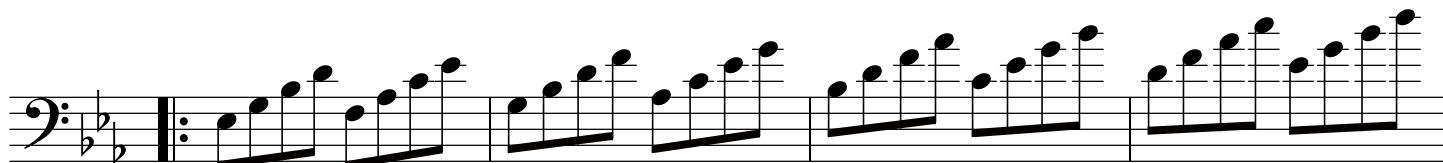
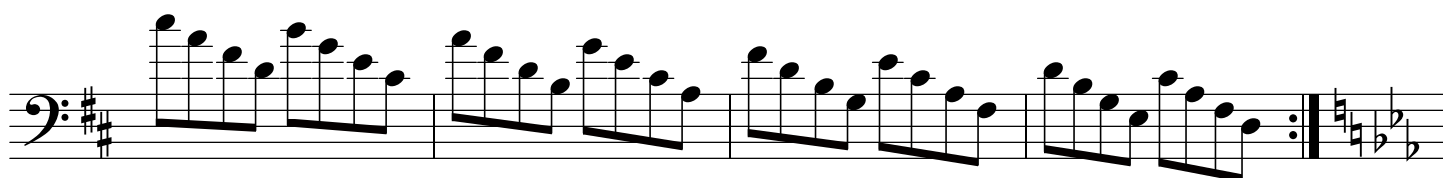
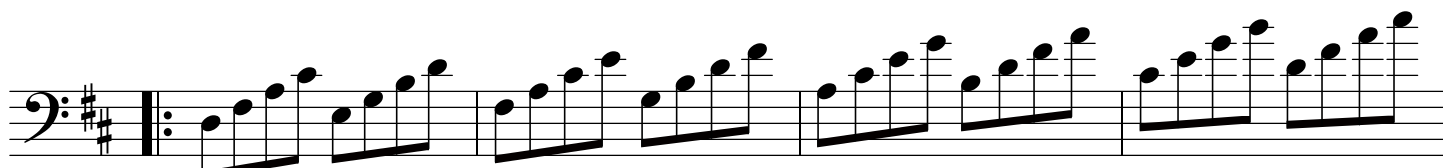
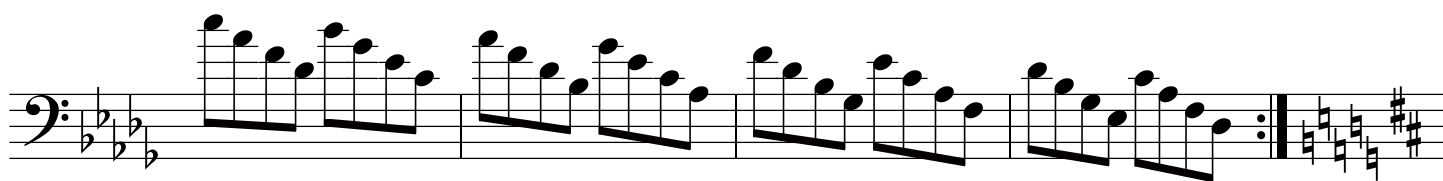
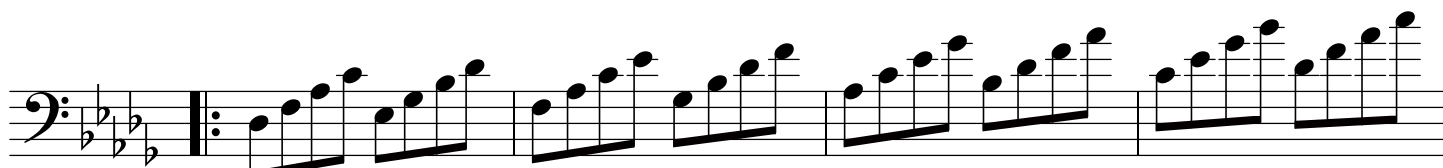
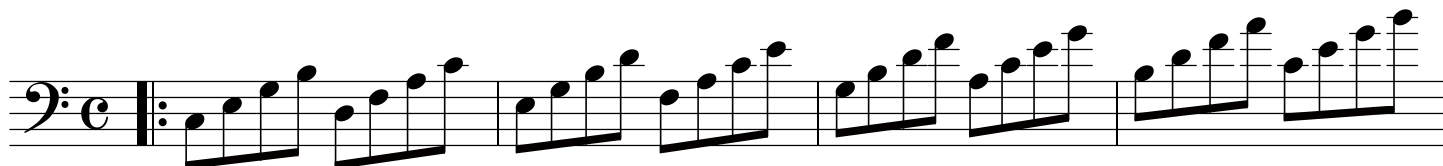
Bass-ic Exercises

Scale-tone 7th chord arpeggios for the keys of **A^b**, **A**, **B^b**, and **B** major.

The image displays eight staves of musical notation for bass clef instruments. Each staff consists of two lines: a lower line with a bass clef and an upper line with a treble clef. The first staff begins with a common time signature 'C'. The second staff has a key signature of three flats (A-flat major). The third staff has a key signature of two flats (B-flat major). The fourth staff has a key signature of two sharps (B major). The fifth staff has a key signature of no sharps or flats (A major). The sixth staff has a key signature of three flats (A-flat major). The seventh staff has a key signature of two sharps (B major). The eighth staff has a key signature of two sharps (B major). Each staff contains a sequence of arpeggiated chords, with a repeat sign at the end of each line.

Bass-ic Exercises

Scale-tone 7th chord arpeggios for the keys of **C, Db, D** and **Eb** major.



Bass-ic Exercises

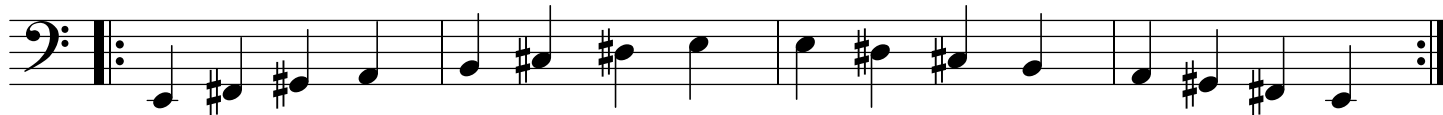
Lower register modal scales: B, E, A, D, G, C, & F.

These scales cover the area not addressed by tonic-to-tonic scale practice.

E Lydian (B Major)



E Ionian (E Major)



E Mixolydian (A Major)



E Dorian (D Major)



E Aeolian (G Major)



E Phrygian (C Major)



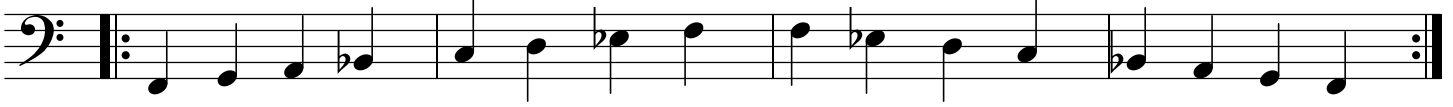
E Locrian (F Major)



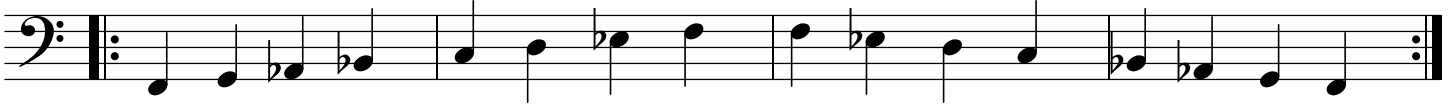
Bass-ic Exercises

Lower register modal scales: Bb, Eb, Ab, Db, & Gb.

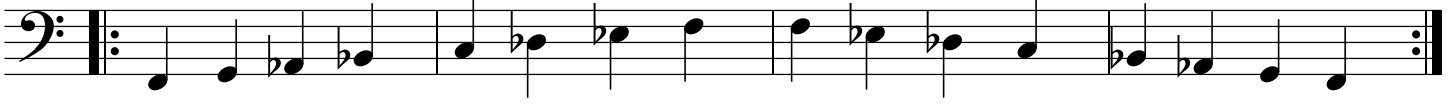
F Mixolydian (Bb Major)



F Dorian (Eb Major)



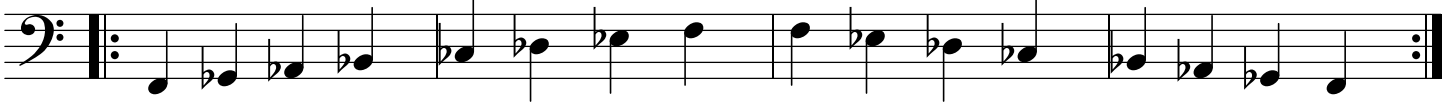
F Aeolian (Ab Major)



F Phrygian (Db Major)



F Locrian (Gb Major)



Upper register modal scales: D,G,C,F,Bb,Eb,Ab.

+ = thumb

G Lydian-(D Major)

G Ionian-(G Major)

G Mixolydian-(C Major)

G Dorian-(F Major)

G Aeolian-(Bb Major)

G Phrygian-(Eb Major)

G Locrian-(Ab Major)

Bass-ic Exercises

Upper register modal scales (cont.): Db, F#, B, E, A.

Gb Lydian-(Db Major)

+ = thumb

F# Ionian-(F# Major)

F# Mixolydian-(B Major)

F# Dorian-(E Major)

F# Aeolian-(A Major)

Bass-ic Exercises

Minor major 7th, Diminished, & Whole Tone Scales

Bb Minor major 7th Scale

Musical notation for the Bb Minor major 7th Scale in bass clef, common time. The scale is: Bb2, Bb3, Bb4, Bb5, Bb6, Bb7, Ab7, Ab8. Fingering: 1 2 4 1 4 0 2 4 4 2 0 4 1 4 2 1.

F Minor major 7th Scale

Musical notation for the F Minor major 7th Scale in bass clef, common time. The scale is: F2, F3, F4, F5, F6, F7, Eb7, Eb8.

G Minor major 7th Scale

Musical notation for the G Minor major 7th Scale in bass clef, common time. The scale is: G2, G3, G4, G5, G6, G7, F#7, F#8.

The 3 Diminished Scales

Musical notation for the first Diminished Scale in bass clef, common time. The scale is: C2, C#3, D4, Eb5, E6, F#7, F#8.

Musical notation for the second Diminished Scale in bass clef, common time. The scale is: D2, D#3, Eb4, E5, F#6, F#7, G#8.

Musical notation for the third Diminished Scale in bass clef, common time. The scale is: E2, E#3, F#4, G5, Ab6, Ab7, B8.

The 2 Whole Tone Scales

Musical notation for the first Whole Tone Scale in bass clef, 6/4 time. The scale is: C2, C3, C4, C5, C6, C7, C8.

Musical notation for the second Whole Tone Scale in bass clef, common time. The scale is: C2, C3, C4, C5, C6, C7, C8.

Minor major 7th Scales (cont.): E, F#, Ab, A, B, C, Db, D, and Eb.

E Minor major 7th



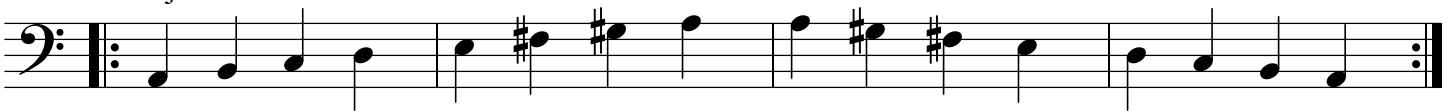
F# Minor major 7th



Ab Minor major 7th



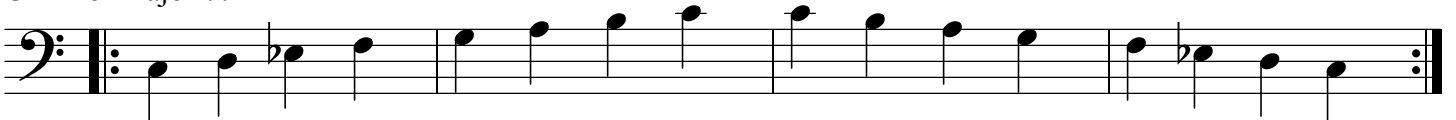
A Minor major 7th



B Minor major 7th



C Minor major 7th



Db Minor major 7th



D Minor major 7th



Eb Minor major 7th



Bass-ic Exercises

Triplet right and left hand coordination exercises.

